

Trademark Application & Post-Registration Process Timelines

How long does it take? That is a frequent, and fair, question heard quite often from clients. This document provides an overview of the process steps and timelines associated with filing a trademark application under various filing bases and the post-registration process steps and timelines for maintaining a trademark registration.

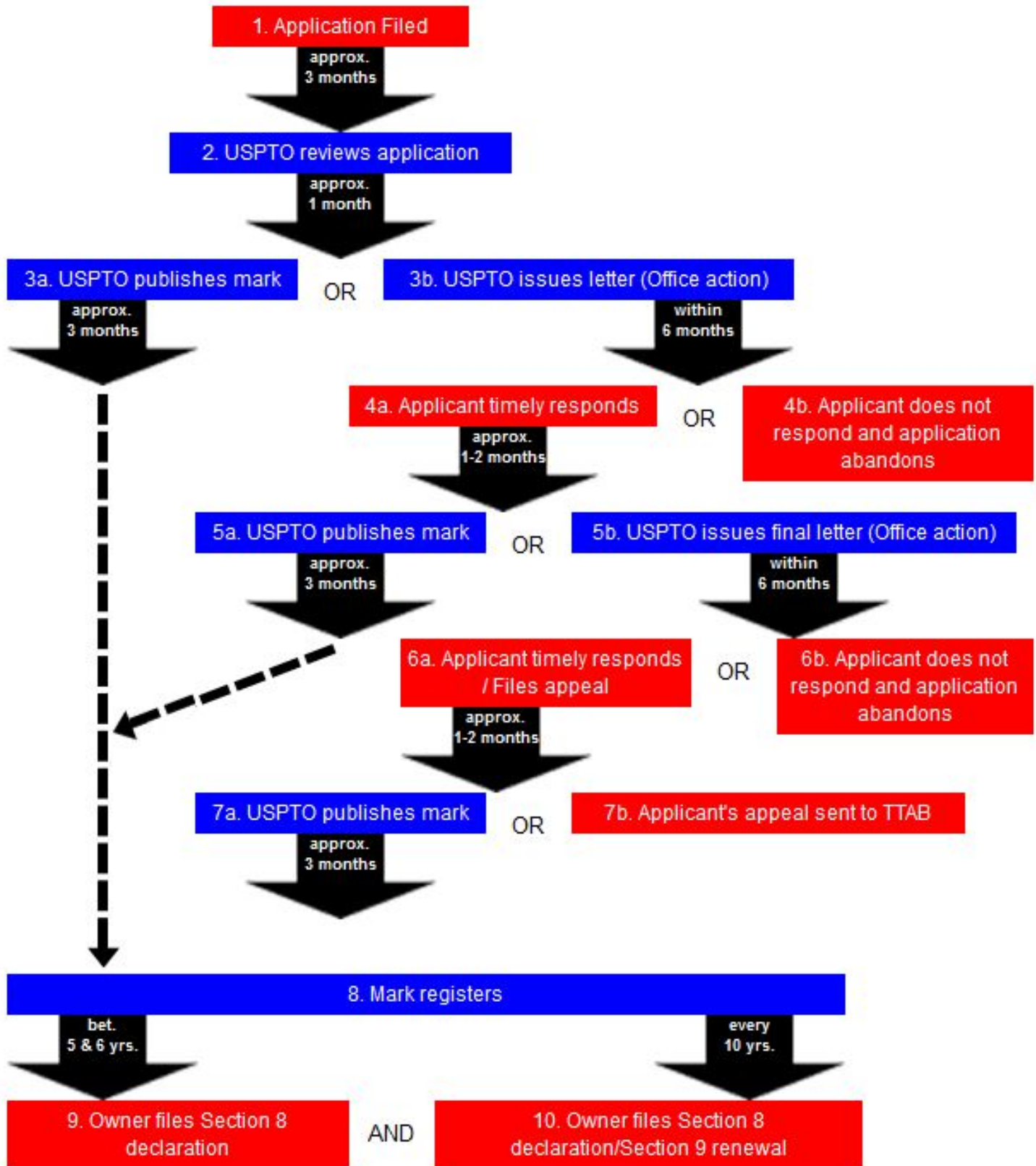
This overview does not cover every application or post-registration scenario. If you find that your application falls well outside of any of the listed timelines do not hesitate to contact your trademark attorney. Further information about these timeline charts and a fuller explanation of each step can be found on the USPTO website at http://www.uspto.gov/trademarks/process/tm_timeline.jsp.

Table of Contents

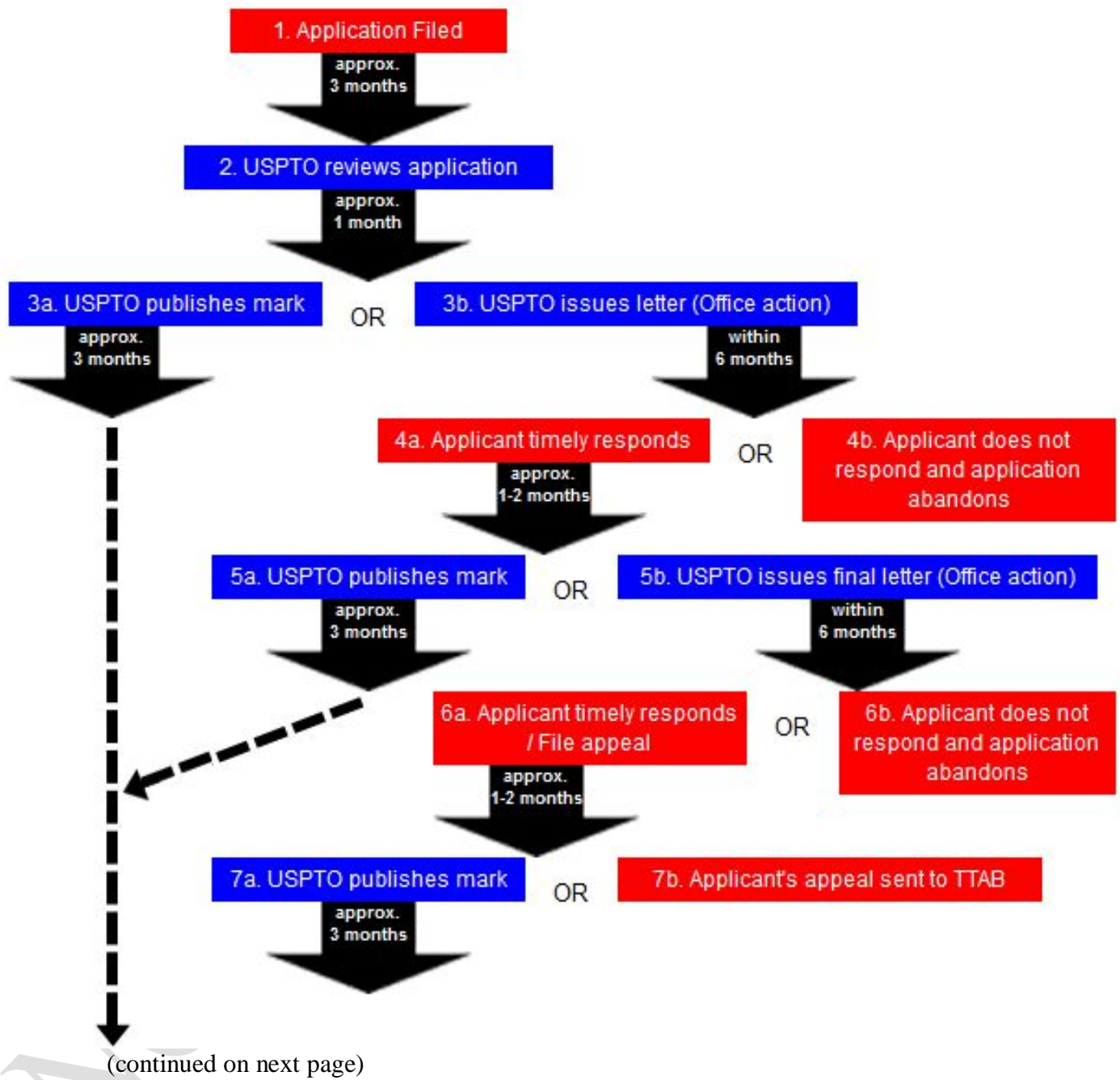
Section 1(a) Timeline: Application based on use in commerce	2
Section 1(b) Timeline: Application based on intent to use	3
Section 44(d) Timeline: Application based on foreign application	5
Section 44(e) Timeline: Application based on a foreign registration	7
Section 66(a) Timeline: Application based on the Madrid Protocol	8
Post-Registration Timeline for all Registrations except Madrid Protocol-Based Registrations	9
Post-Registration Timeline for Madrid Protocol-Based Registrations	10

Section 1(a) Timeline: Application based on use in commerce

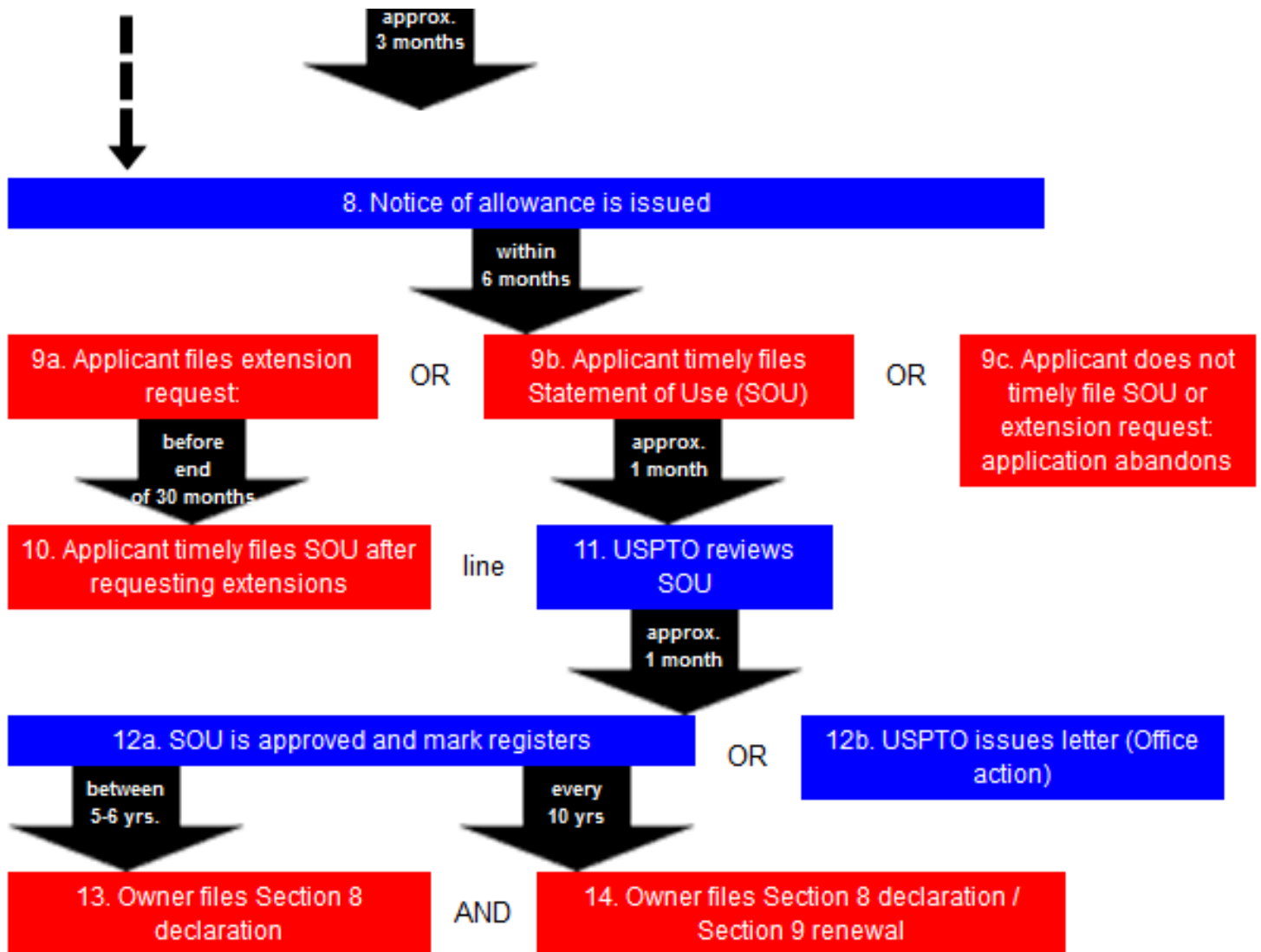
(http://www.uspto.gov/trademarks/process/tm_sec1atimeline.jsp)



Section 1(b) Timeline: Application based on intent to use
(http://www.uspto.gov/trademarks/process/tm_sec1btimeline.jsp)

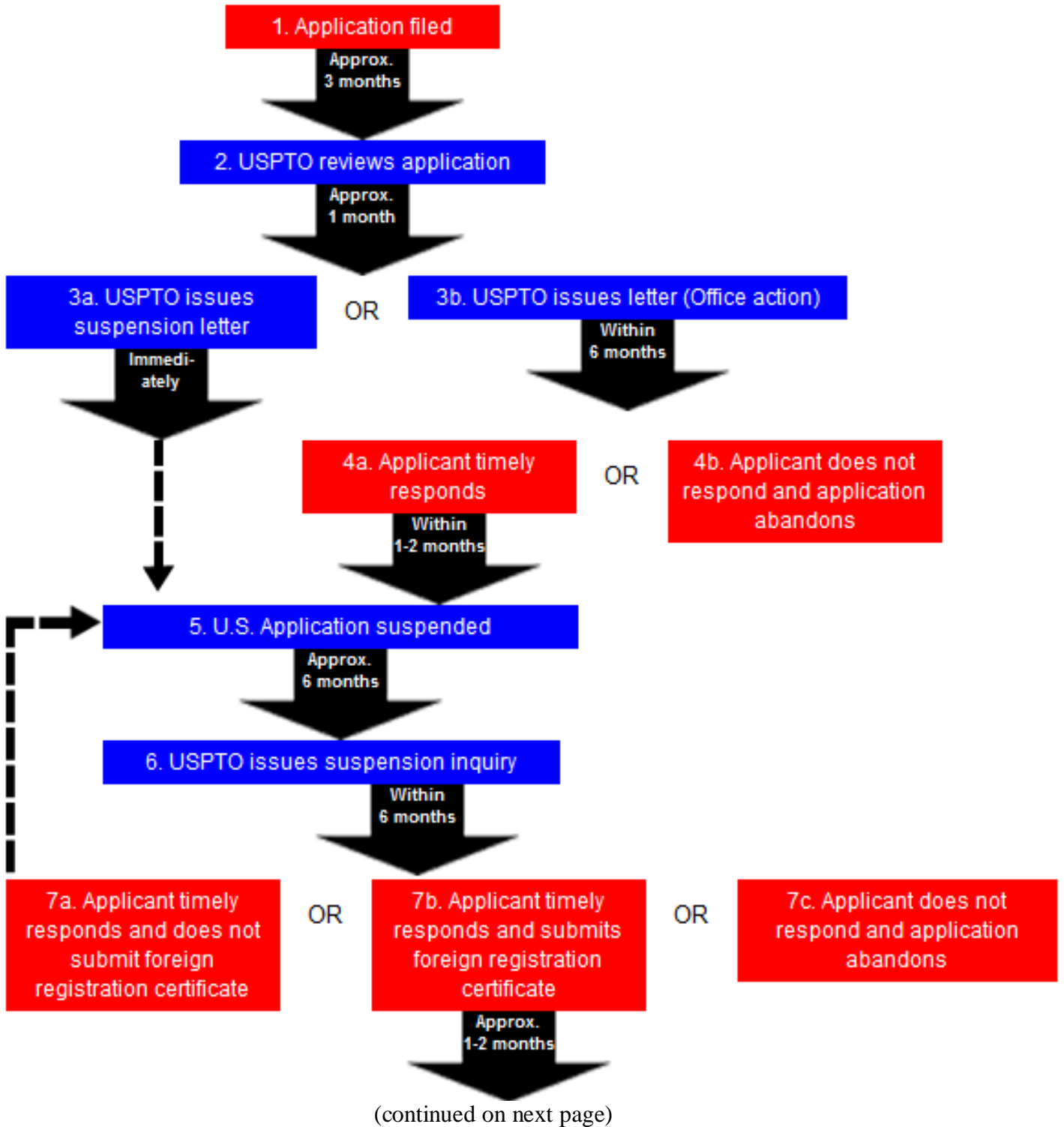


(continued from previous page)

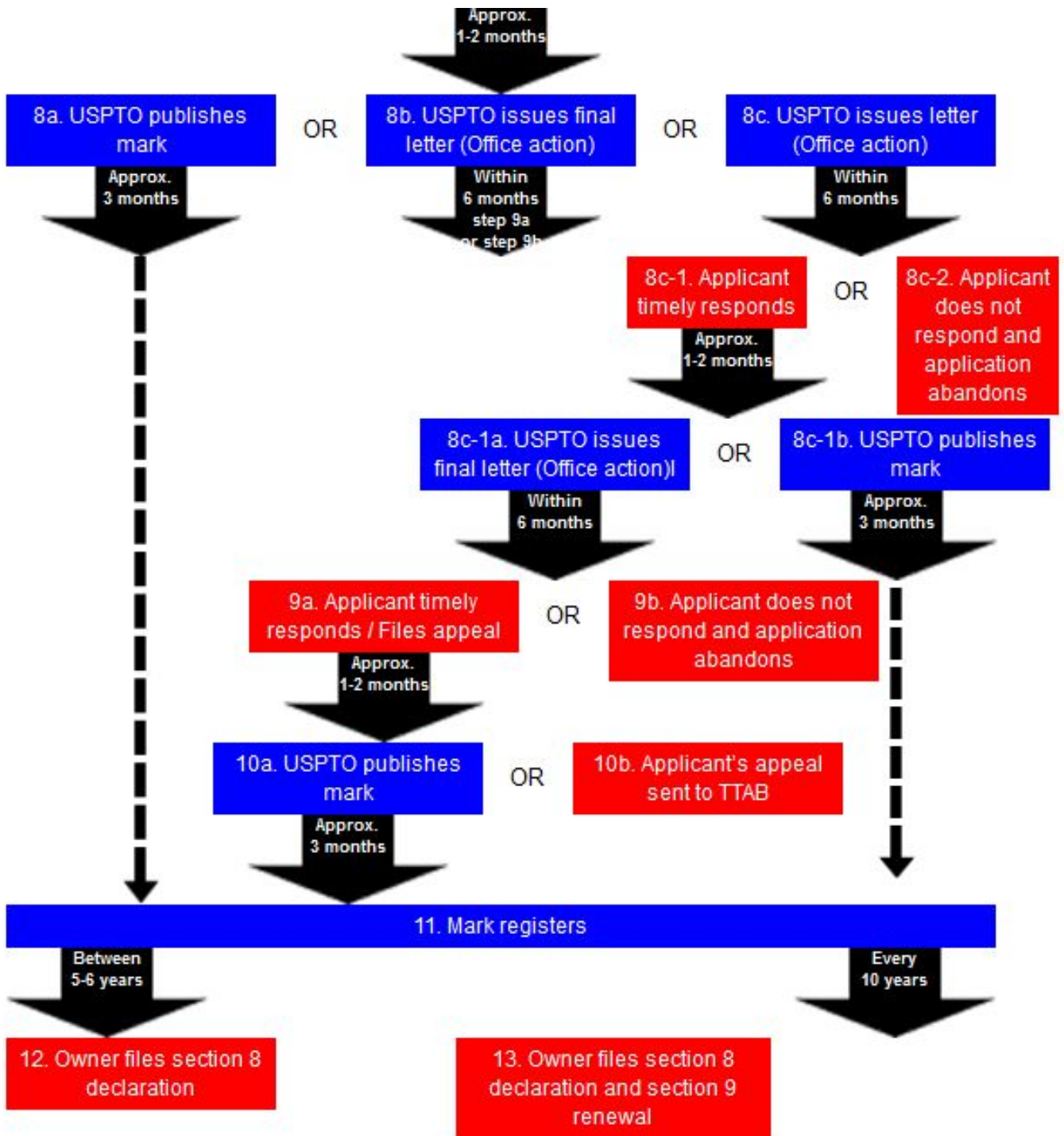


NOT

Section 44(d) Timeline: Application based on a foreign application
(http://www.uspto.gov/trademarks/process/tm_sec44dtimeline.jsp)

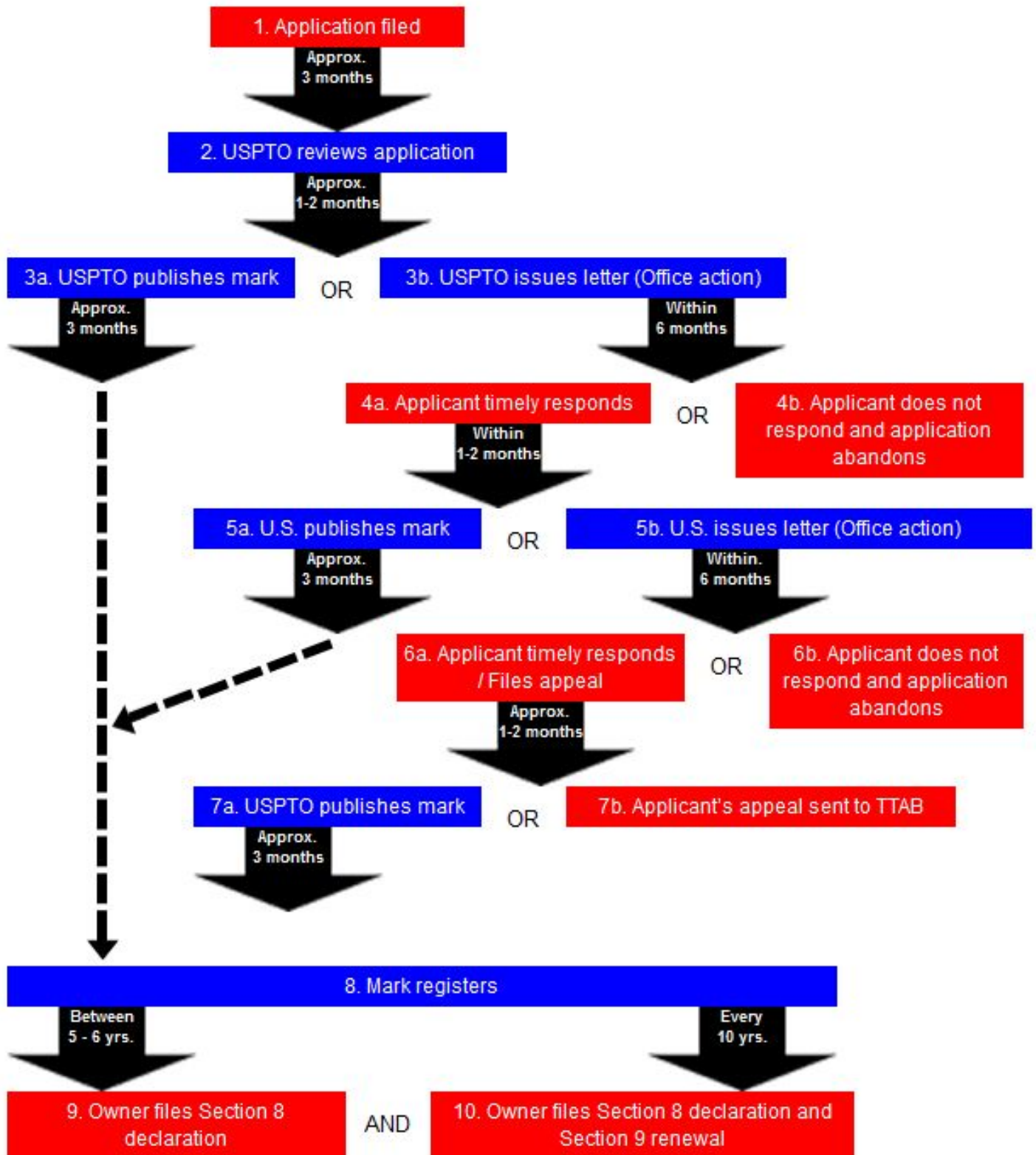


(continued from previous page)

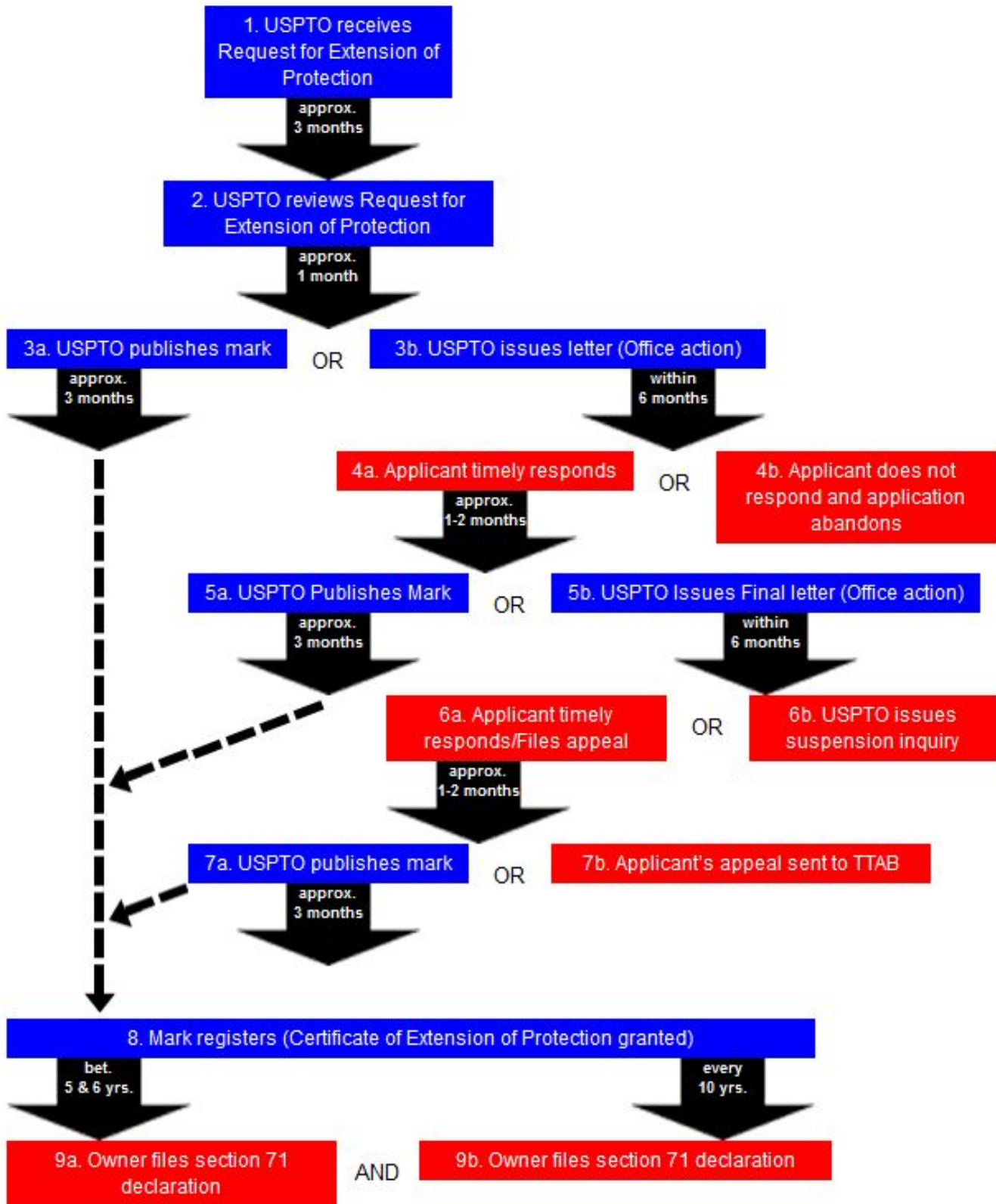


Section 44(e) Timeline: Application based on a foreign registration

http://www.uspto.gov/trademarks/process/tm_sec44etimeline.jsp

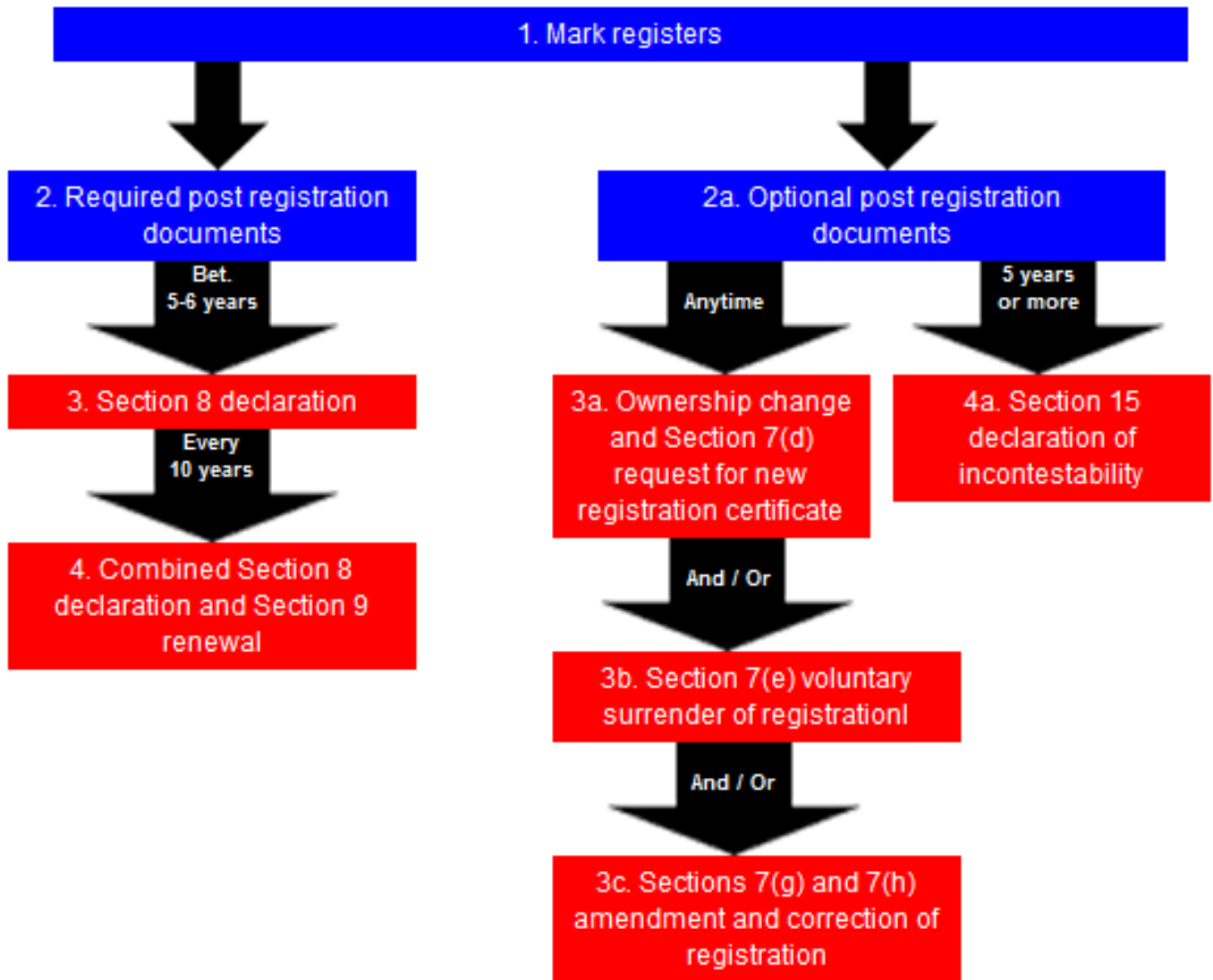


Section 66(a) Timeline: Application based on the Madrid Protocol
http://www.uspto.gov/trademarks/process/tm_sec66atimeline.jsp



Post-Registration Timeline for all Registrations except Madrid Protocol-Based Registrations

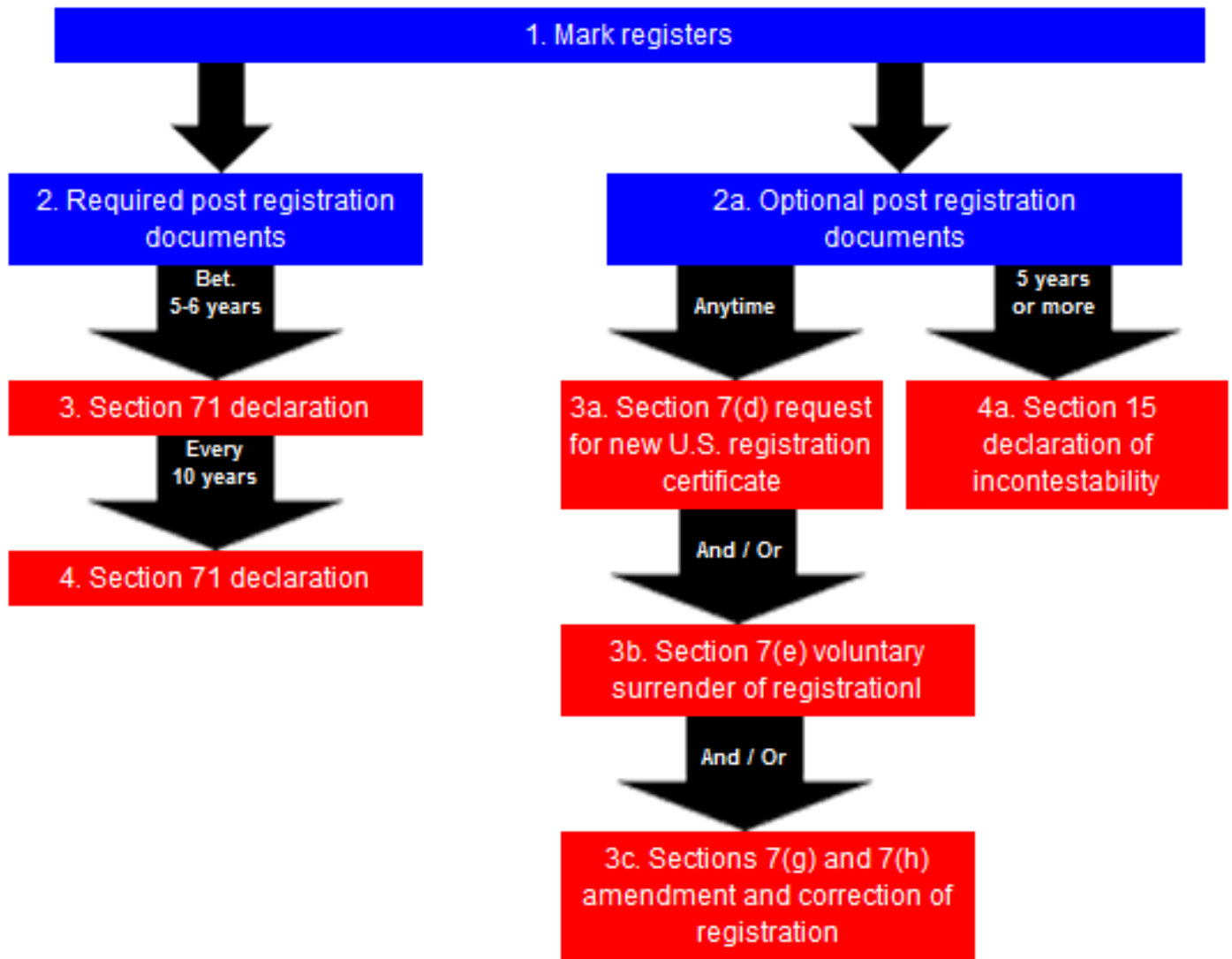
(http://www.uspto.gov/trademarks/process/postreg_nonmadrid_timeline.jsp)



NO

Post-Registration Timeline for Madrid Protocol-Based Registrations

(http://www.uspto.gov/trademarks/process/postreg_madrid_timeline.jsp)



NO